

**A FALLEN**

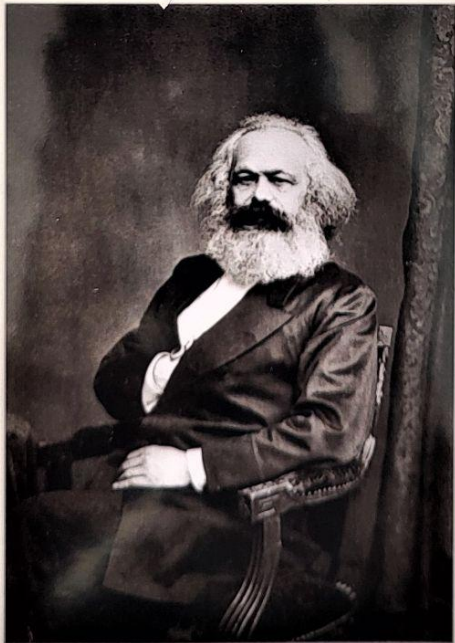
**WORLD**

**AN ALIENATION**

**HANDBOOK**

# ALIENATION

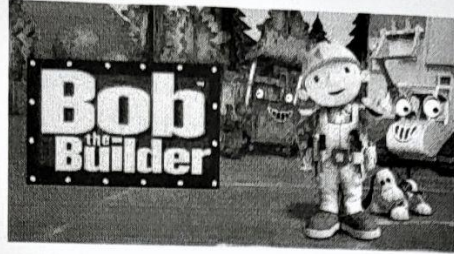
h@NDb00k



19th-century German intellectual [Karl Marx](#) (1818–1883) identified and described *Entfremdung* (alienation of labor) as Laborers not owning the products they labor to create



NOT



## Hero Workers' Hall of Fame



From 6th-11th  
August 1967 Tom and I  
loaded the concrete mixer  
for Wal and Graham to  
lay drives on the new  
houses. This was the  
full employment economy  
in action. Thank you  
John Maynard Keynes.

Working week was  
8:00 am - 5:30 pm  
and Saturdays

8:00 am - 12:00 pm  
10 mins tea break  
morning and afternoon  
and 20 minutes  
for lunch in the  
tea hut.







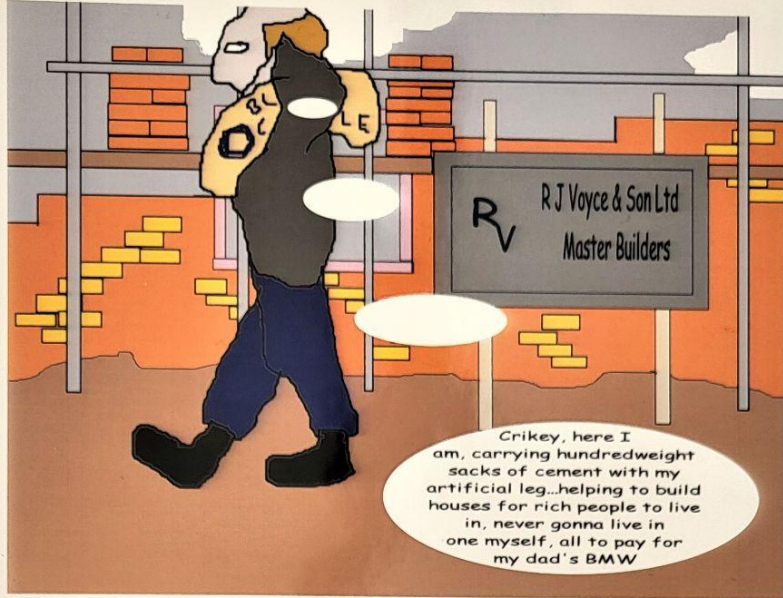
At 8.16 am on 17th February 1970, Wally, Graham and I began unloading 5,000 bricks from London Brick Co, by hand. On 12th March 1970 at 3.47 pm the indicated brick was laid by Cyril.



During the week of 3rd November 1973, the heroic gang of Mark S, Mick G, Mick L, Simon X and Andrew V excavated the footings for

this house which was built on a pub garden. When the digging reached solid sandstone, a petrol driven concrete breaker was used. In the morning when the tool shed was opened, the foreman said: "Take your pick."





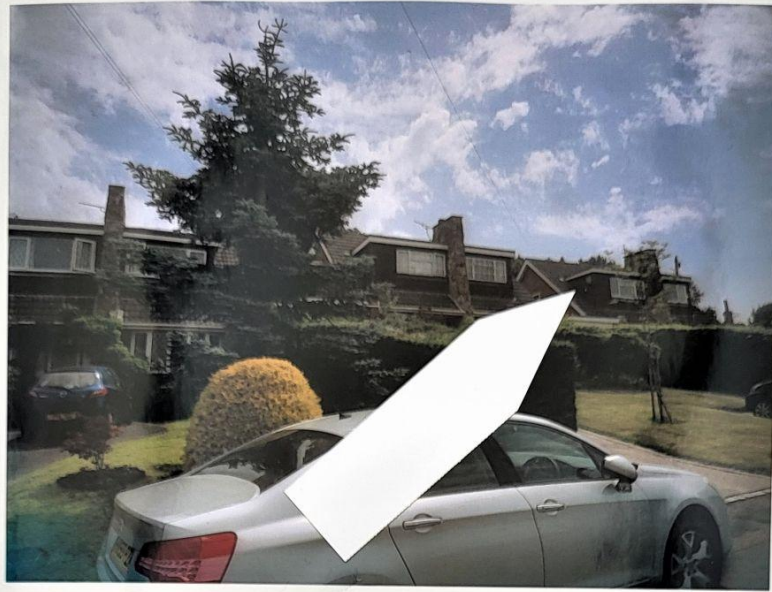
1  
9  
7  
3



1  
9  
7  
4

I laboured to help build these houses. My father lived in one. When I returned from university having failed the exams, I had a fight with my father and started to live in a car. The prodigal son did not apply to me and shortly afterwards I went into a mental hospital.





1  
9  
7  
6

I unloaded supplies and grouted bathroom tiles for these houses. My father lived in one house and one day on day leave from Hellingly asylum I found a letter from the asylum psychiatrist sent to my father. It said I was schizophrenic and that is how I discovered my diagnosis, no-one told me at Hellingly.

—————  
"You will build a house, but you will not live in it."  
From The Bible, brought to you by Justin Welby,  
Archbishop of Canterbury.

<sup>30</sup> You will be pledged to be married to a woman, but another will take her and rape her. You will build a house, but you will not live in it. You will plant a vineyard, but you will not even begin to enjoy its fruit. <sup>31</sup> Your ox will be slaughtered before your

Zephaniah 1:13 ~ New International Version ~

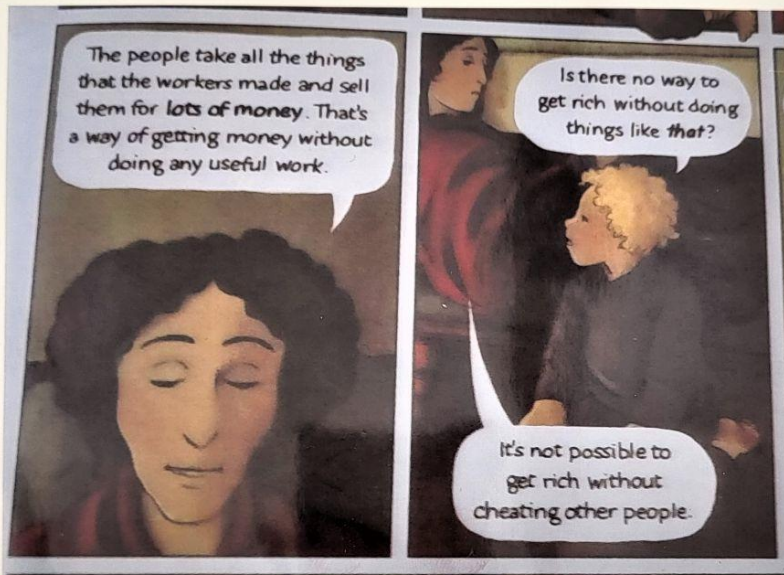


in Christ  
+ Jas



alienation...alienation... alienation...alienation... alienation... alienation...  
alienation... alienation... alienation... alienation... alienation...alienation...

I helped to build 3 and 4 bedroom houses like these from 1962 to 1974, twelve years, and never got to own one. I was never introduced to the people who bought the houses, there were no 'thank you's.'



An explanation from Robert Tressell  
'Ragged Trousered Philanthropists'  
(Foodbanks are run by the Tressell Trust)

#### New Living Translation

So their property will be plundered, their homes will be ransacked. They will build new homes but never live in them. They will plant vineyards but never drink wine from them.

#### New Living Translation

You trample the poor, stealing their grain through taxes and unfair rent. Therefore, though you build beautiful stone houses, you will never live in them. Though you plant lush vineyards, you will never drink wine from them.

Appearing more than once in The Good Book



alienation

/əɪliˈeɪʃ(ə)n/

See definitions in:

All

Philosophy

Psychiatry

Theatre

Law

noun

- (in Marxist theory) a condition of workers in a capitalist economy, resulting from a lack of identity with the products of their labour and a sense of being controlled or exploited.

Thanks Google



## 31 Years In A Bike Ride



After 20 years in and out of mental institutions I was resettled to a residential home. I was on 300 Largactyl and 20 Stelazine a day, I had £170 in the Post Office, and I got £10.80 a week DSS pocket money. I had a window of 2 hours a day when I could concentrate enough to follow my Open University honours degree course. I could afford tobacco, soap and shaving items. The year was 1991.

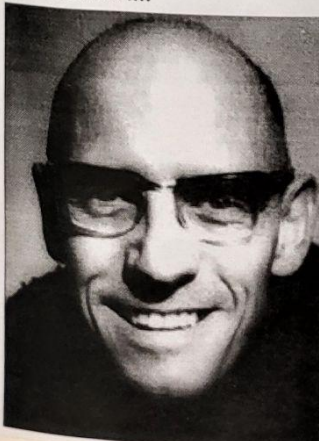




After successfully completing one year of the OU with the result of 2:1 carers agreed I could move to a group home where there were five of us mad men and one girlfriend, and a lovely and very tough cat. After paying £10 top up to the home owner, I was slightly better off than the residential home, and could eat and make tea whenever I wanted. After my room was vandalised while I was on a day trip to France, my social worker got me out.

### \*SCHIZO FACTOID

Michel Foucault: '...the pathological character of alienation.'  
From the introduction to *Madness and Civilisation*: 'Madness, which has been alienated by society, is now defined as psychological alienation...'



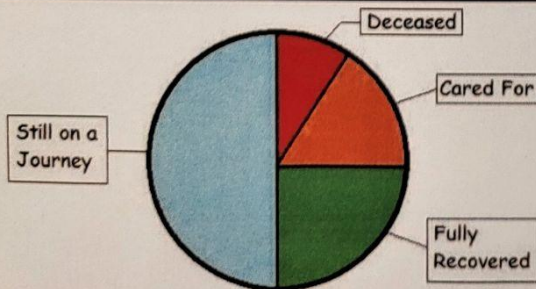
Madness may not be caused by alienation,  
but that is where it is to be found.





My ASW (approved social worker) heard of a bedsit coming free and he moved me in. There was an outside toilet where I found a white cat sleeping once. Heating was by a two-bar electric fire which used more electricity than the maximum that the meter could hold. My tablets were reduced and I became more active. My benefits were increased so I could smoke tailor made cigarettes and I managed to pay for counselling. That year my OU result was a 2:2. I graduated at a ceremony in The Brighton Centre. There was a very cold bathroom upstairs, I was lucky that I was there between spring and autumn, missing the worst of the cold weather.

### Outcomes for those with Schizophrenia



Sources: Royal College of Psychiatrists, Schizophrenia.com and elsewhere

*Is it acceptable to be consigned to this group?*

OPTIONS INCLUDE:

1 in 10 chance of premature death

1 in 4 chance only of recovery





*As winter approached I was found a one bedroom flat where the Housing Benefit of £80 a week was paid direct to the landlord. After the heating broke down and the landlord took two weeks to fix it, I got a private breakdown insurance, which I needed to call on at least twice. Damp streamed down the lounge windows and there was mould in the bedroom so that summer clothes put away for the winter were ruined. I got a shower installed for £500 and my personal hygiene improved. I gave up smoking after getting an MA. I also got a B grade at A Level History. I looked after the gardens front and back. By this time I had been changed onto atypical antipsychotic medication which made me much less sedated.*

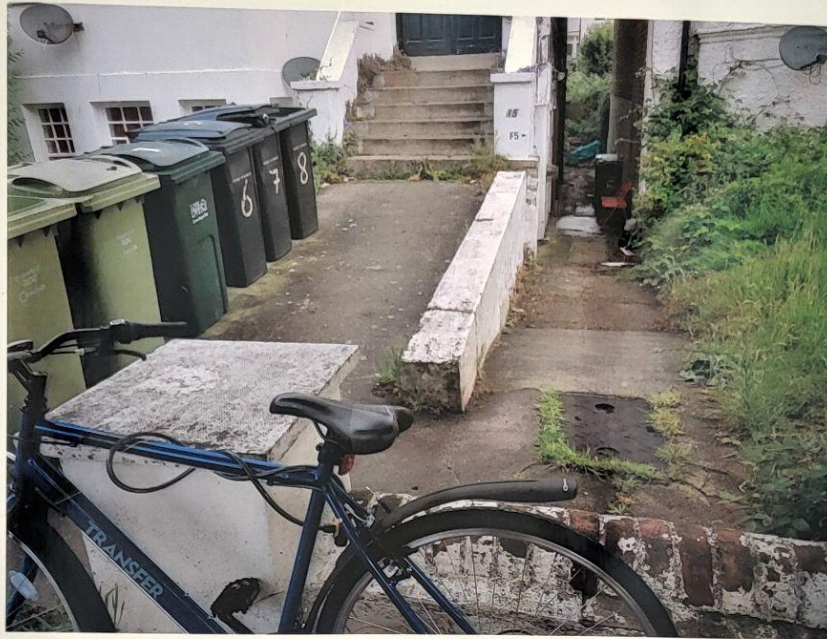
#### **SOME PLACES YOU MIGHT NOT WANT TO BE:**

European Schizophrenia Cohort found that 32.8% of the British sample had experienced homelessness in their lifetime, with 13.2% having experienced 'rooflessness'. In other words, if you have schizophrenia you have at least a one in three chance of homelessness.

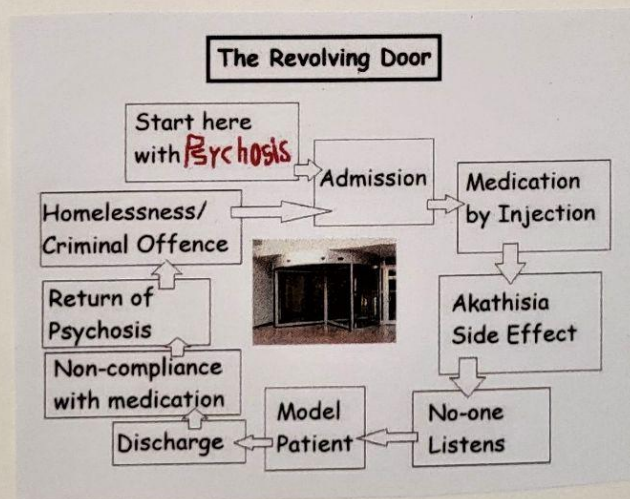
Figures released recently by the Prison Reform Trust reveal that around 15% of men and 25% of women confined in the UK prison system are suffering from psychosis. This amounts to around 5% of the schizophrenic population of the UK.







I moved into another private rented flat which was in better order, as before, arranged by the local authority accommodation team. However I experienced noise from the neighbour above, started to sleep in my car, and spent time at The Sanctuary.



People with schizophrenia often experience human rights violations both inside mental health institutions and in community settings.





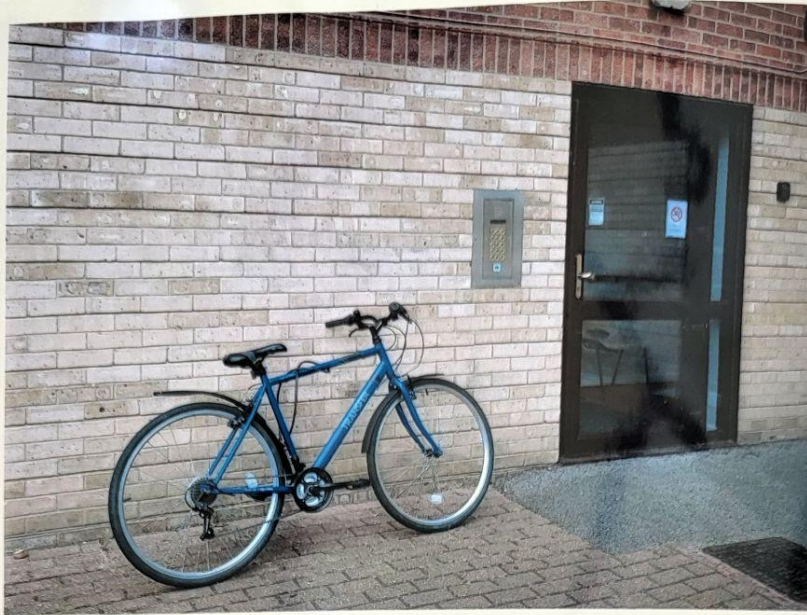
**From The Sanctuary I was found a place in supported accommodation. This was a nice modern building and two of us painted the non-smoking lounge. The staff got us new furniture for the lounge, the residents enjoyed cooking together, and a resident who was an expert taught me about wine. I became a service user representative at the central office, and I started to make digital images of asylum life and to give talks as an expert by experience.**

Google

Search 2022.6.29

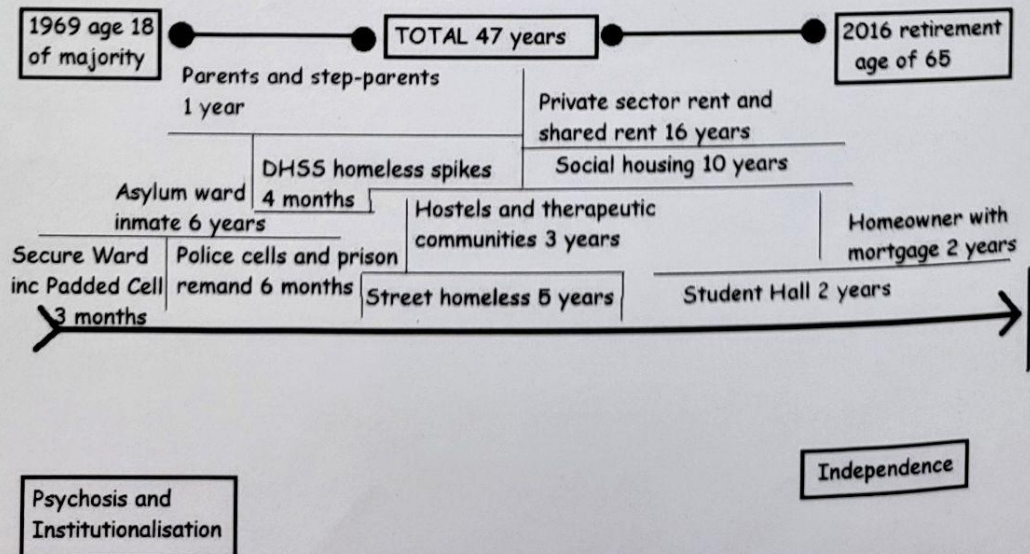
- Q schizophrenics should
- Q schizophrenics should
- Q **should schizophrenics be forced to take medication**
- Q should schizophrenics smoke weed
- Q should schizophrenics drive
- Q should schizophrenics get married
- Q should schizophrenics drink alcohol
- Q **should schizophrenics be institutionalized**
- Q should schizophrenics avoid caffeine
- Q should schizophrenics live alone
- Q **should schizophrenics be locked up**





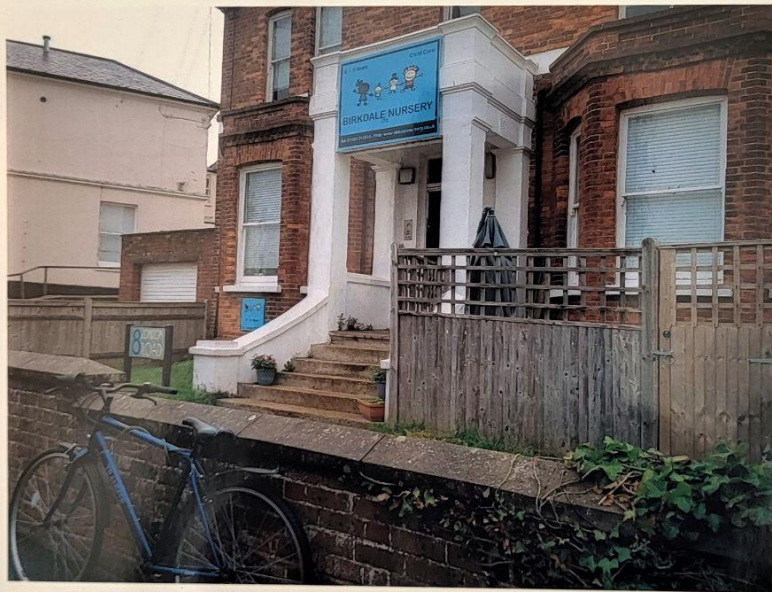
The team at the supported accommodation got me a place in a housing association sheltered accommodation due to my age and disability. These were recently built flats, in good condition, and with no mould or heating breaking down. I moved in there in 2005, changed flats once in the same block, and am still there in 2022. In spring 2022 I bought a blue bike to cycle around the town and seafront.

### AS A WORKING AGE ADULT





With the coming of Community Care, the Accommodation Team was set up and helped to find places to live for dozens, maybe hundreds, of vulnerable people with mental health issues. The building was sold and is now a nursery. The Accommodation Team was disbanded.



Among sceptics there is the proposition that people with mental health issues can be deemed as recovered, so there is no longer a need to provide support services, "Whose Recovery is it anyway?"



With the high suicide rate and higher risk of physical illness like heart disease that people with schizophrenia already face, the rough sleeping issue only adds to the enormous burden of suffering that people living with schizophrenia have to bear. (Living with Schizophrenia, 2022).





This place used to be a group home for five mad men, one with a girlfriend, and Boots the amazing cat.

The building was sold and turned into private flats. Another replacement group home was not provided.



Whose Recovery?  
is it anyway?



**\*SCHIZO FACTOID:**

Smoking rates among people with schizophrenia are significantly higher than in the general population, with one meta-analysis of studies from 20 countries showing an average prevalence of 62%. In 2019, the proportion of current smokers in the UK was 14.1%.

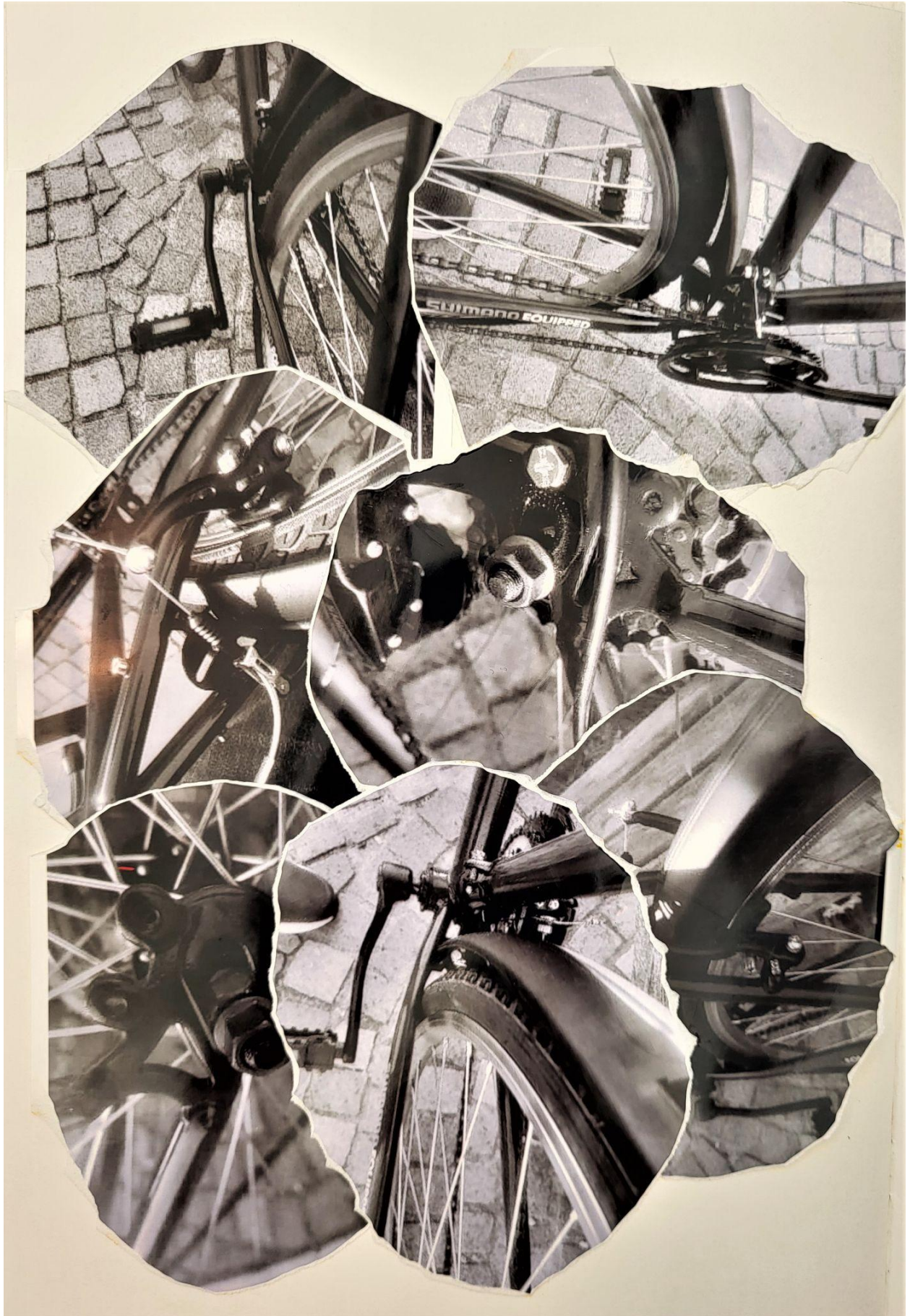
**\*SCHIZO FACTOID:**

It is estimated that just 5% to 15% of people with schizophrenia are in employment, and people with severe mental illness (including psychosis and schizophrenia) are 6 to 7 times more likely to be unemployed than the general population. 'The employment rate in schizophrenia appears to have declined over the last 50 years in the UK.'

Schizophrenia is a killer. Sufferers have a 5 to 10% chance of dying by their own hand within ten years of diagnosis. Because of the higher risk of suicide and greater vulnerability to physical conditions like diabetes people with schizophrenia will die on average 10 - 20 years earlier than the general population.

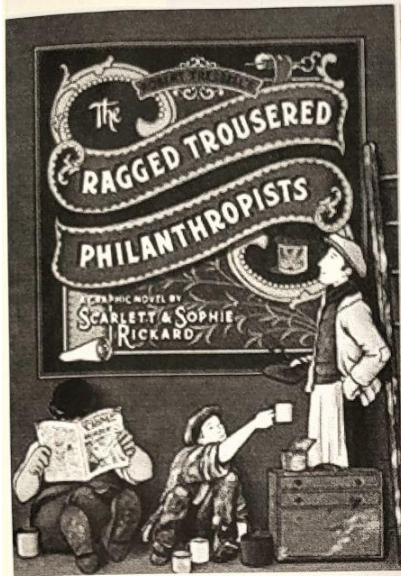
'Collected indices of academic achievement can identify premorbid cognitive dysfunction among individuals who are vulnerable for schizophrenia.' In other words schizophrenia is associated with poor academic achievement.





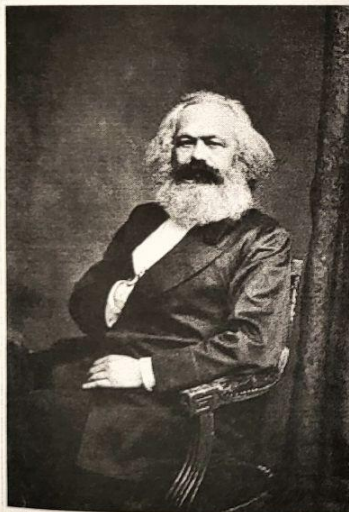


So we're all agreed then



The workers are the philanthropists  
who give to the rich people

Original Book by Robert Tressell of Hastings  
Foodbanks named for Robert: Tressell Trust



19th-century German intellectual Karl Marx (1818-1883) identified and described *Entfremdung* (alienation of labor) as Laborers not owning the products they labor to create

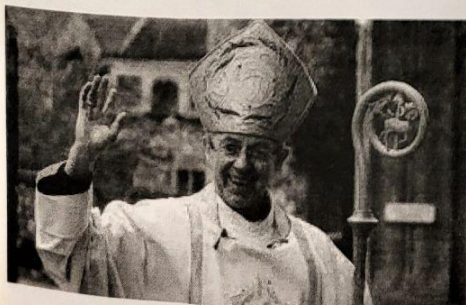
alienation

2. LAW

the transfer of the ownership of property rights.  
"most leases contain restrictions against alienation"

Similar: transfer conveyance passing on han

Well, my heart stopped beating and my hands turned cold  
And my heart stopped beating and my hands turned cold  
And my heart stopped beating and my hands turned cold  
Now I believe what the Bible told

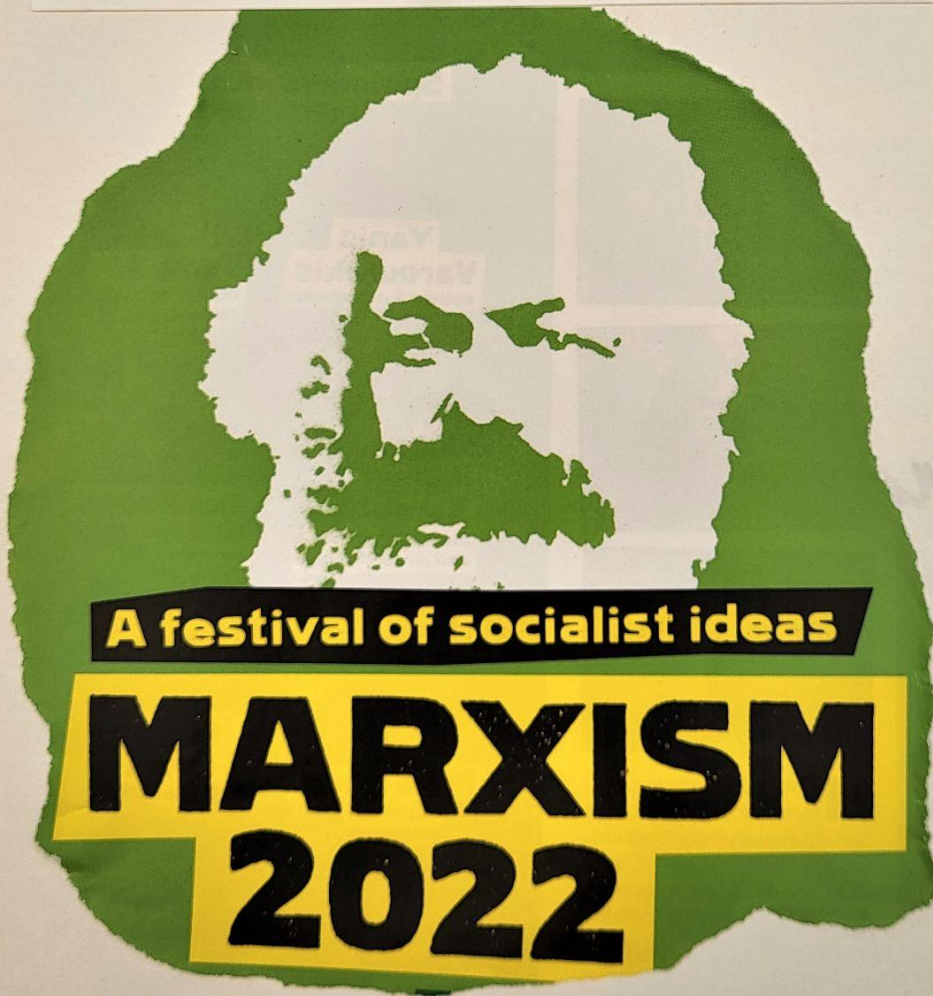


You will build houses and  
never own one yourself

13 Their wealth will be plundered,  
their houses demolished.  
Though they build houses,  
they will not live in them;  
though they plant vineyards,  
they will not drink the wine."



**WHO SAYS SOCIAL  
SCIENCE HAS  
NO MEANING?**



**A festival of socialist ideas**

**MARXISM**

**2022**



Created by  
Andrew

*Andrew*



*Thanks to:-*

Ant *Ant*

Jo *Jo*

Lucy *Lucy*



Recovery  
partners


inspiring hope through peer support



ZINEZONE

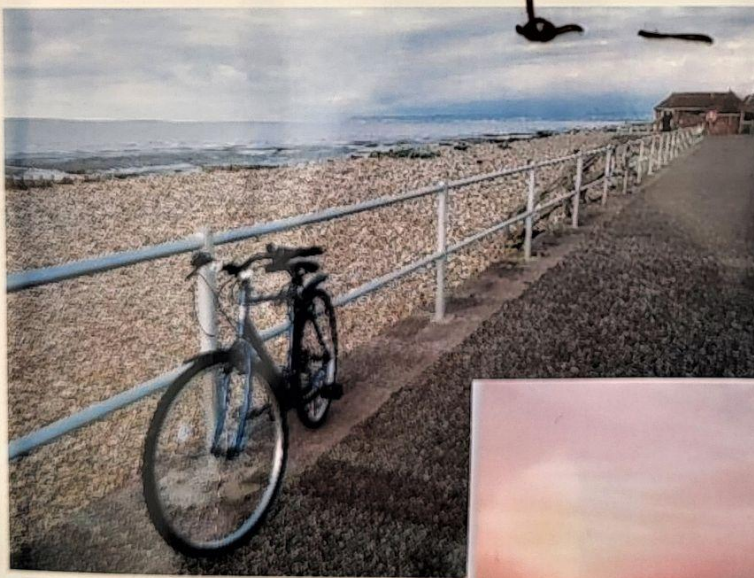
2022





You can end up  
in a happy  
place





Thanks to Lisa  
for the Haiku poem

FROM THE DARKEST NIGHTS  
EMERGE LIFE, HOPE, LOVE AND LIGHT  
HOLD ON IN THE DARK.